

Avaya one-X[®] Communicator (1XC) Rebranding and Customization

Chris Piccuiro
cpiccuiro@avaya.com
908.848.5523

COMPAS ID: 143606

November 2nd, 2009

Contents

1	Default Look.....	1
2	Customize.....	4
2.1	Logo.....	4
2.2	Window Titles.....	4
2.3	Emergency Call Handling Disclaimer.....	5
3	Example.....	5

1 Default Look

The following screen shots show the typical look and feel of the 1XC application windows.

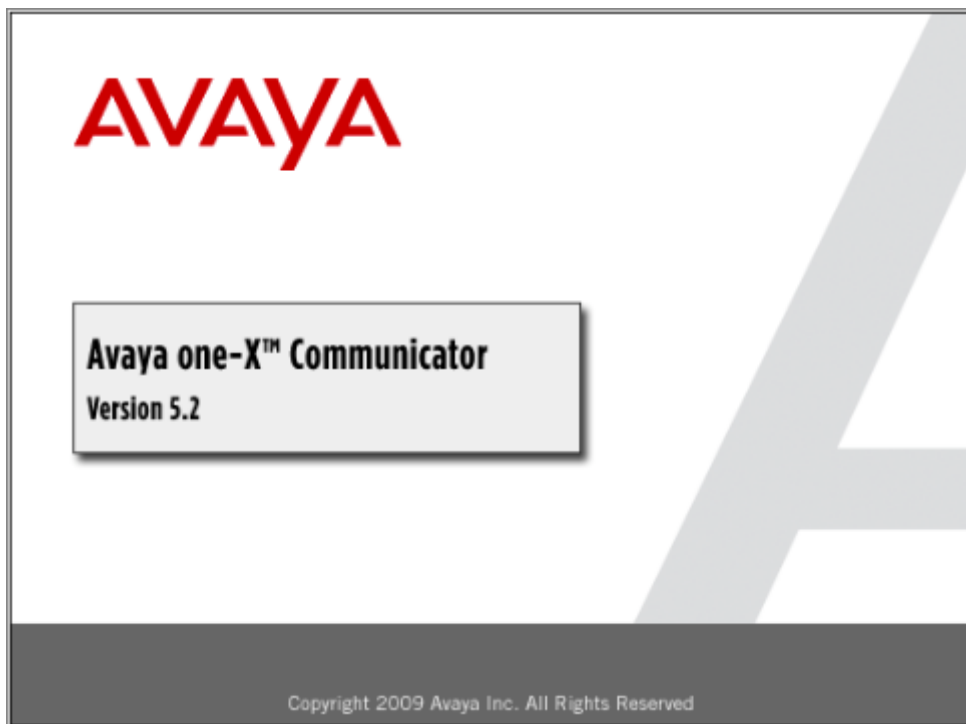


Figure 1 - Splash screen



Figure 2 - Login window

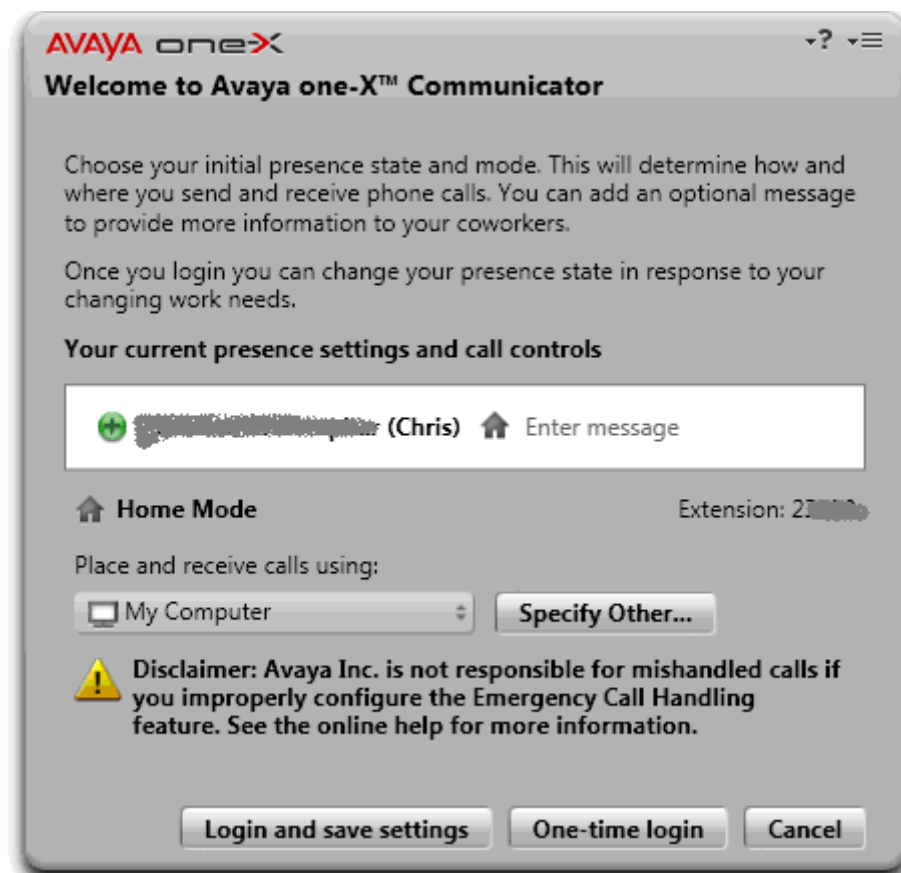


Figure 3 - Welcome window

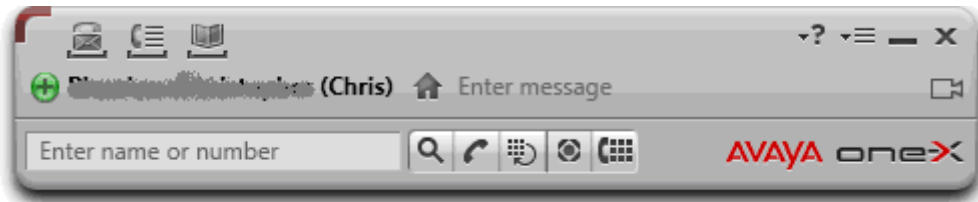


Figure 4 - Main window

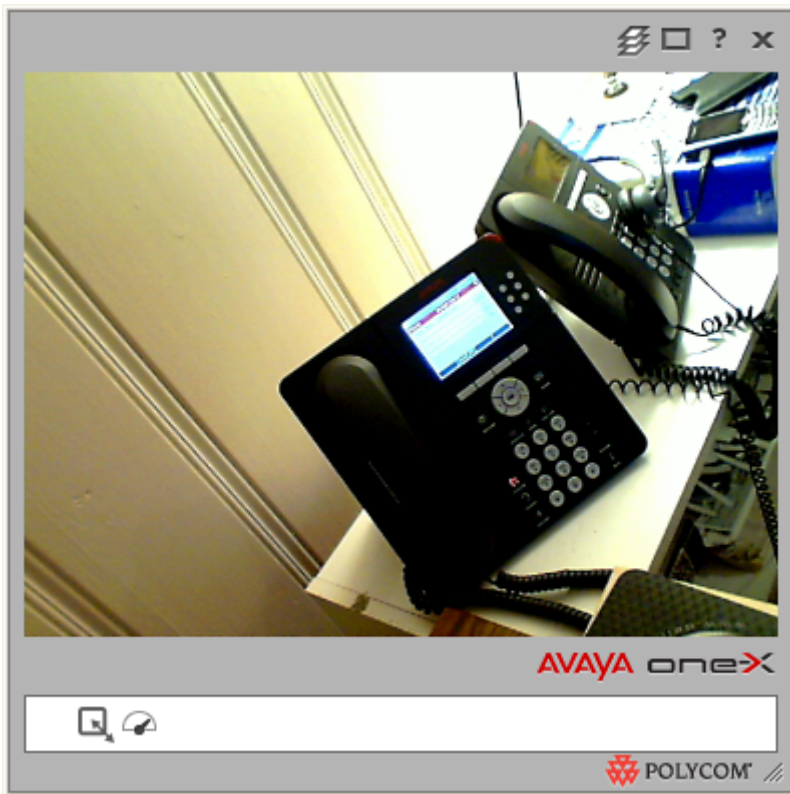


Figure 5 - Video window

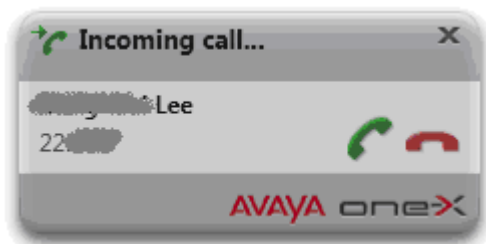


Figure 6 - Incoming call alert toast



Figure 7 - About window

2 Customize

This section describes how to customize certain aspects of 1XC.

2.1 Logo

You can customize the application logo by adding a custom image to the installation. The application logo image file must be named *logo.png* and have a size of 121 pixels in width and 22 pixels in height.

`<onexc installation path>\custom\logo.png`

Note:

- If using release **5.2 Service Pack 1** or above the image size should be 22 pixels in height and **127 pixels in width**.
- The *custom* directory does not exist by default and must be created.
- The Avaya logo on the About window cannot be customized and will not change.

2.2 Window Titles

You can customize the titles shown on the Login and Welcome windows by adding text files specifying the new title.

```
<onexc installation path>\custom\login.txt  
<onexc installation path>\custom\welcome.txt
```

2.3 Emergency Call Handling Disclaimer

You can add an additional emergency call handling disclaimer to the Welcome window.

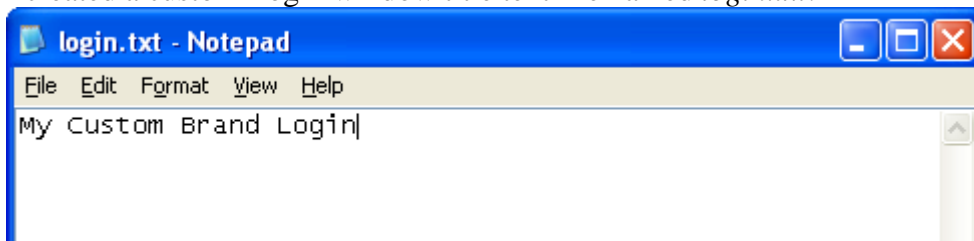
```
<onexc installation path>\custom\disclaimer.txt
```

3 Example

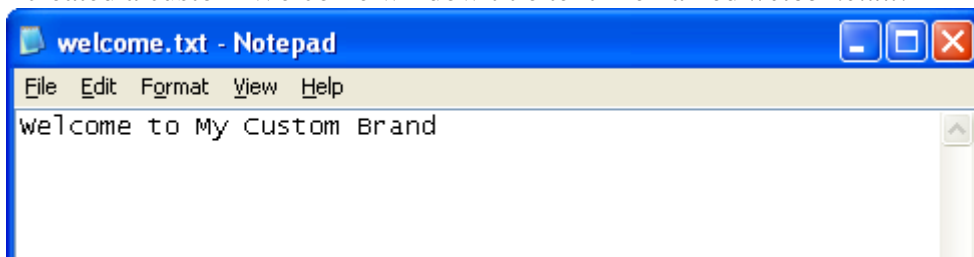
I created a custom image named *logo.png* with a size of 121 x 22 pixels.



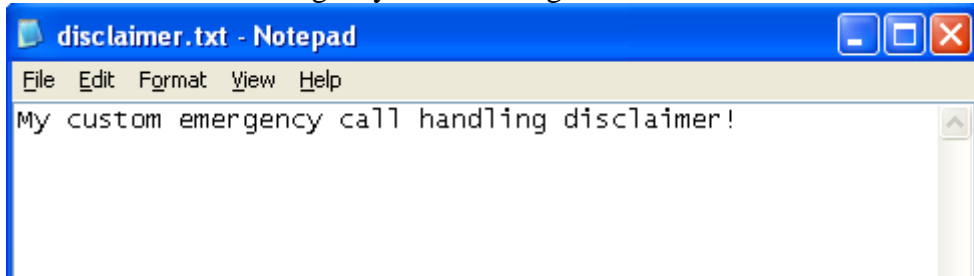
I created a custom Login window title text file named *login.txt*.



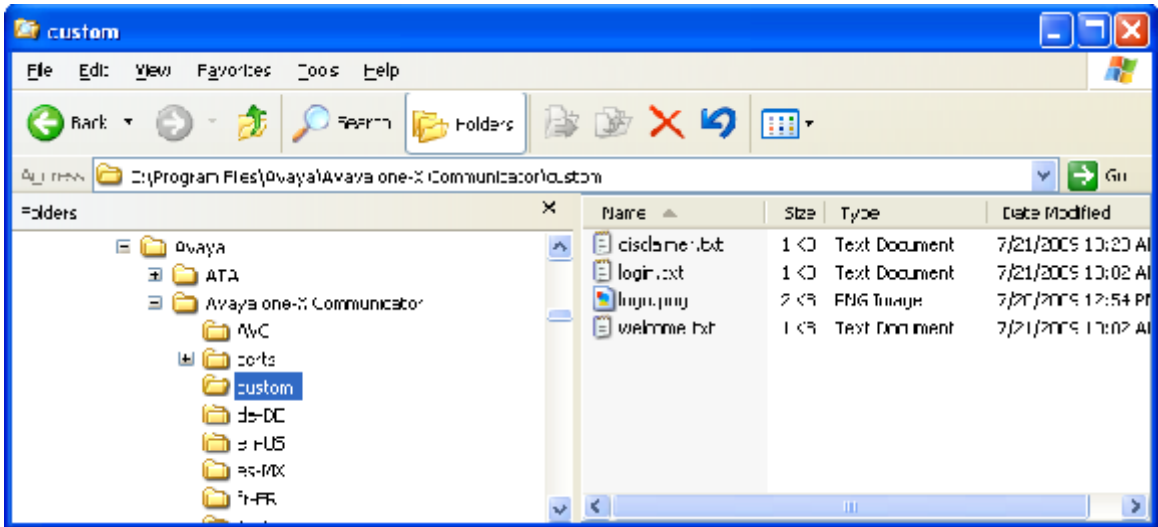
I created a custom Welcome window title text file named *welcome.txt*.



I created a custom emergency call handling disclaimer named *disclaimer.txt*.



I add these custom files to my installation path. I created the *custom* directory because it does not exist by default.



The following screen shots show how my customized 1XC will look.

