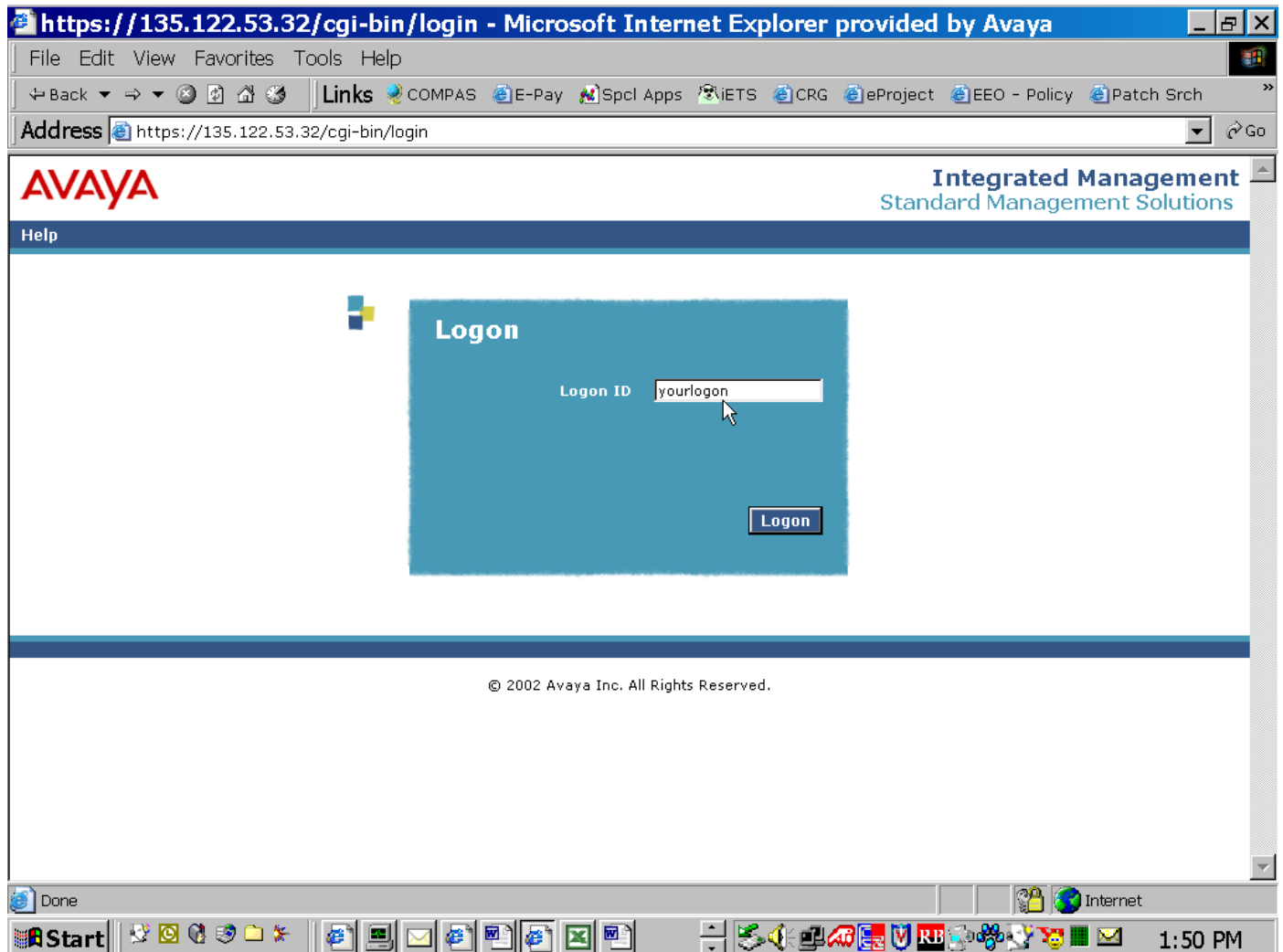


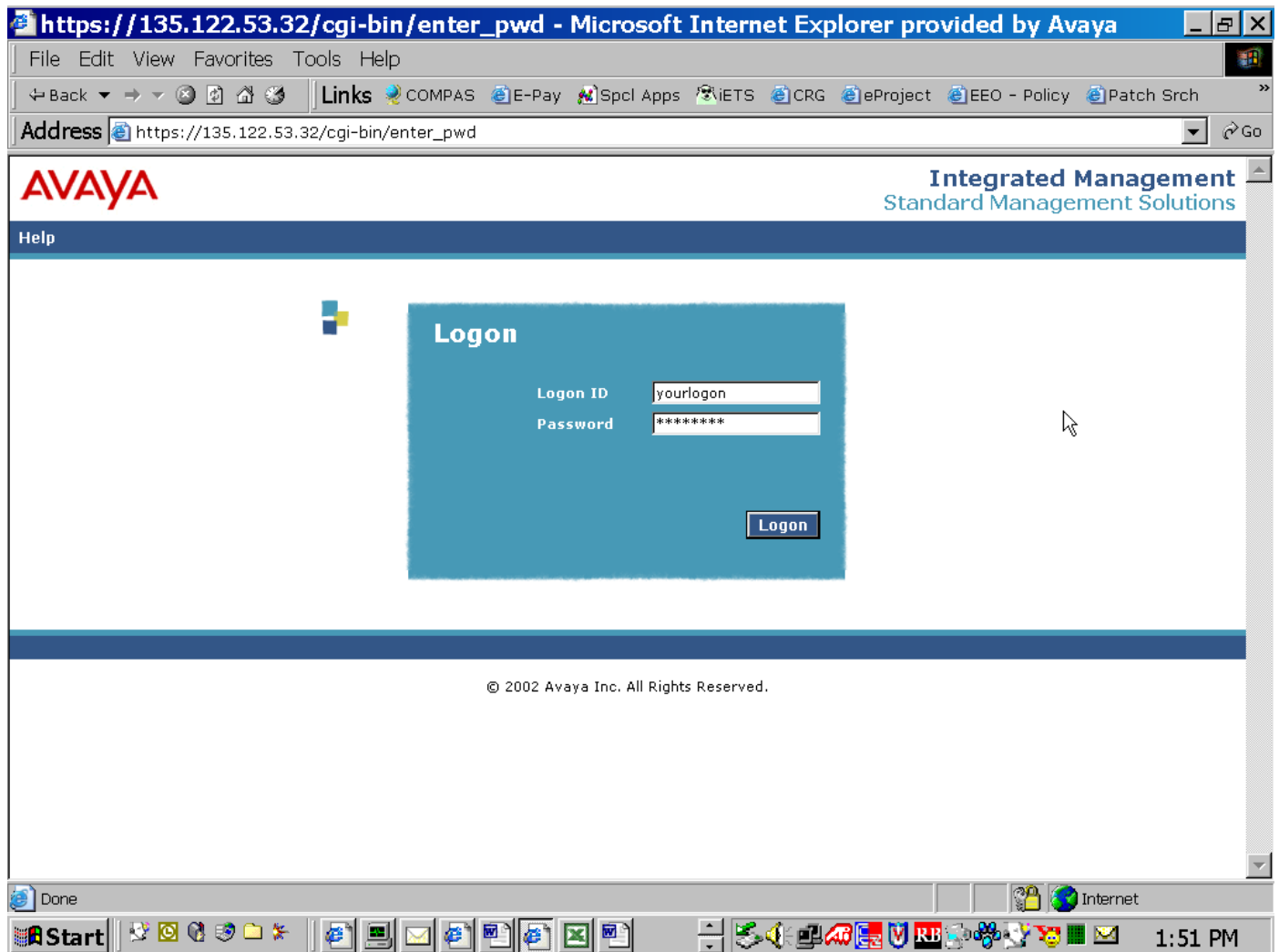
Time Change in S8700: Via Web Interface

***If you encounter difficulty in setting time
via the web interface call (800)225-7585***

1. Input IP address for the active server in address field in your browser.
This will bring up the logon screen.




2. Type in your logon and click on the "logon" button.
This will bring up the same screen with the password field.



3. Type in your password and click the logon button again. This will bring up the "Integrated Management" "Standard Management Solutions" main menu.

The screenshot shows a Microsoft Internet Explorer browser window titled "stevieray01(Standard Management Solutions) - Microsoft Internet Explorer provided by Avaya". The address bar shows the URL "https://135.122.53.32/cgi-bin/unified". The browser's menu bar includes File, Edit, View, Favorites, Tools, and Help. The toolbar contains navigation buttons (Back, Forward, Stop, Refresh, Home) and a search bar with the text "Links COMPAS E-Pay Spcl Apps IETS CRG eProject EEO - Policy Patch Srch".

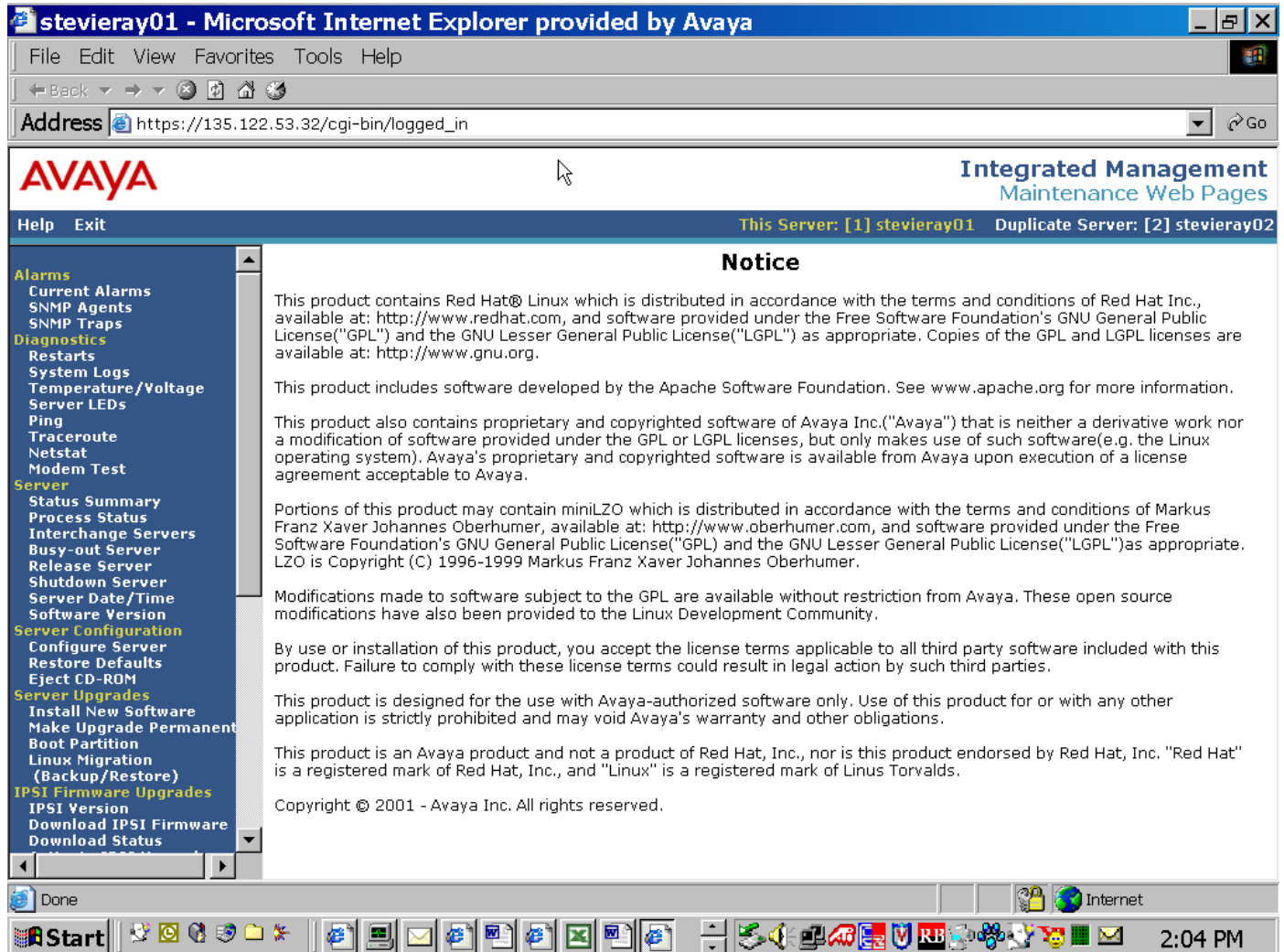
The main content area of the browser displays the Avaya logo on the left and the text "Integrated Management Standard Management Solutions" on the right. Below this is a navigation bar with "Help" and "Log Off" links. The main menu consists of four rows, each with a category name, a description, and a "Launch" link:

 Installation	The Avaya™ Installation Wizard allows you to quickly install your system.	Launch Avaya™ Installation Wizard
Administration	The Native Configuration Manager allows you to administer this system using a graphically enhanced SAT applet. The Avaya™ Station Administration Wizard runs in your browser and lets you perform station moves, adds, and changes.	Launch Native Configuration Manager Launch Avaya™ Station Administration Wizard
Maintenance	The Maintenance Web Interface allows you to maintain, troubleshoot, and configure the media server.	Launch Maintenance Web Interface
Upgrade	The Upgrade Tool allows you to upgrade Local Survivable Processors and G700 and G350 Media Gateways.	Launch Upgrade Tool

At the bottom of the page, there is a copyright notice: "© 2002 Avaya Inc. All Rights Reserved." The browser's status bar at the bottom shows the Start button, a taskbar with various application icons, and the system clock displaying "1:54 PM".

4. Locate the "Maintenance" section of the menu and click on "Launch Maintenance Web Interface".

This will launch a second window for "Integrated Management" "Maintenance Web Pages". On the left side of the browser window you will see a menu of various maintenance choices.



5. Locate the mustard colored heading of "Server" and follow the choices down to "Server Date/Time". Click on "Server Date/Time".

stevieray01 - Microsoft Internet Explorer provided by Avaya

File Edit View Favorites Tools Help

Address https://135.122.53.32/cgi-bin/logged_in Go

AVAYA Integrated Management Maintenance Web Pages

Help Exit This Server: [1] stevieray01 Duplicate Server: [2] stevieray02

Alarms
Current Alarms
SNMP Agents
SNMP Traps

Diagnostics
Restarts
System Logs
Temperature/Voltage
Server LEDs
Ping
Traceroute
Netstat
Modem Test

Server
Status Summary
Process Status
Interchange Servers
Busy-out Server
Release Server
Shutdown Server
Server Date/Time
Software Version

Server Configuration
Configure Server
Restore Defaults
Eject CD-ROM

Server Upgrades
Install New Software
Make Upgrade Permanent
Boot Partition
Linux Migration
(Backup/Restore)

IPSI Firmware Upgrades
IPSI Version
Download IPSI Firmware
Download Status

Notice

This product contains Red Hat® Linux which is distributed in accordance with the terms and conditions of Red Hat Inc., available at: <http://www.redhat.com>, and software provided under the Free Software Foundation's GNU General Public License("GPL") and the GNU Lesser General Public License("LGPL") as appropriate. Copies of the GPL and LGPL licenses are available at: <http://www.gnu.org>.

This product includes software developed by the Apache Software Foundation. See www.apache.org for more information.

This product also contains proprietary and copyrighted software of Avaya Inc.("Avaya") that is neither a derivative work nor a modification of software provided under the GPL or LGPL licenses, but only makes use of such software(e.g. the Linux operating system). Avaya's proprietary and copyrighted software is available from Avaya upon execution of a license agreement acceptable to Avaya.

Portions of this product may contain miniLZO which is distributed in accordance with the terms and conditions of Markus Franz Xaver Johannes Oberhumer, available at: <http://www.oberhumer.com>, and software provided under the Free Software Foundation's GNU General Public License("GPL") and the GNU Lesser General Public License("LGPL") as appropriate. LZO is Copyright (C) 1996-1999 Markus Franz Xaver Johannes Oberhumer.

Modifications made to software subject to the GPL are available without restriction from Avaya. These open source modifications have also been provided to the Linux Development Community.

By use or installation of this product, you accept the license terms applicable to all third party software included with this product. Failure to comply with these license terms could result in legal action by such third parties.

This product is designed for the use with Avaya-authorized software only. Use of this product for or with any other application is strictly prohibited and may void Avaya's warranty and other obligations.

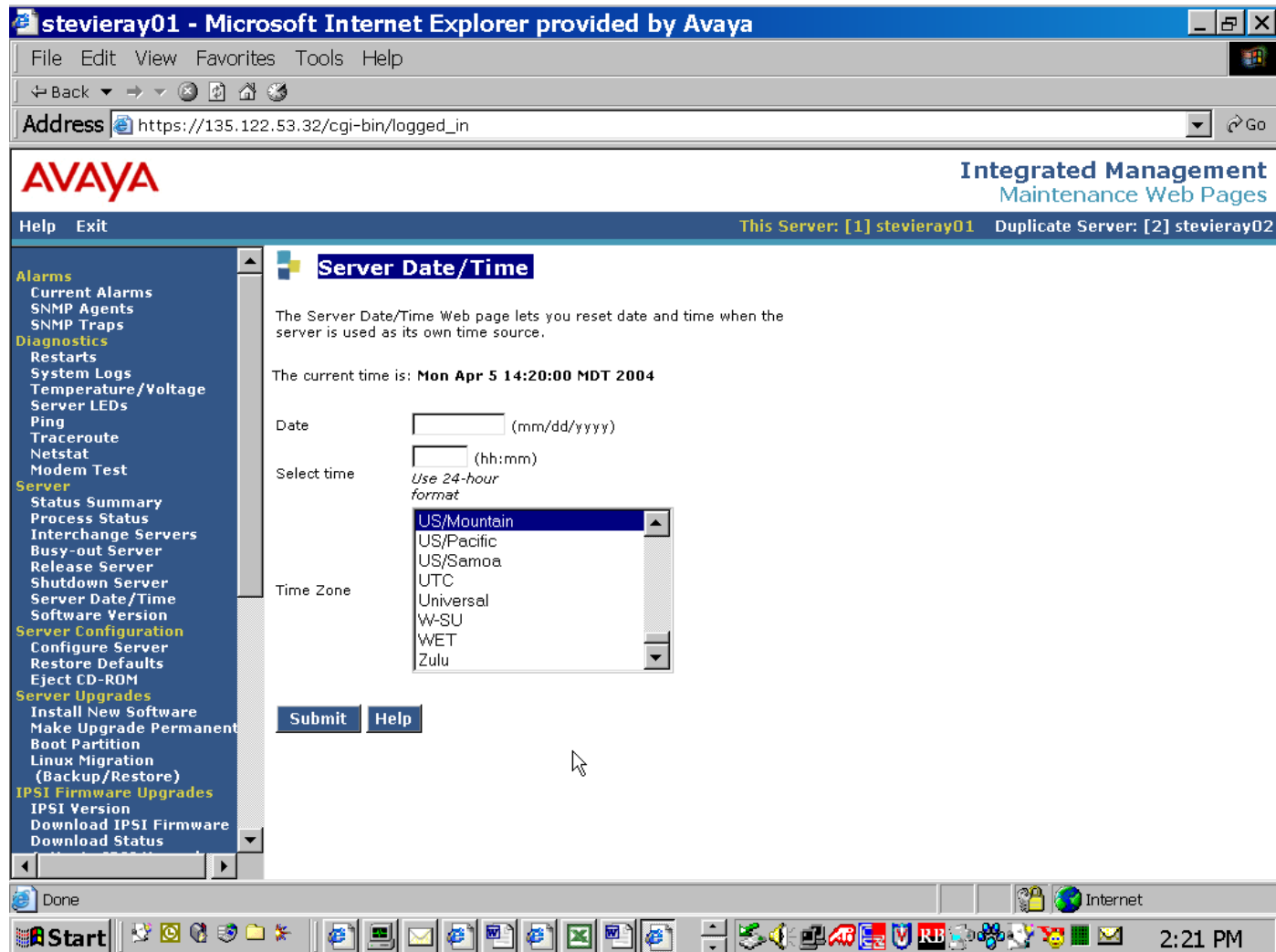
This product is an Avaya product and not a product of Red Hat, Inc., nor is this product endorsed by Red Hat, Inc. "Red Hat" is a registered mark of Red Hat, Inc., and "Linux" is a registered mark of Linus Torvalds.

Copyright © 2001 - Avaya Inc. All rights reserved.

Start [Taskbar icons] Internet 2:18 PM

This will bring up the "Server Date/Time" window.

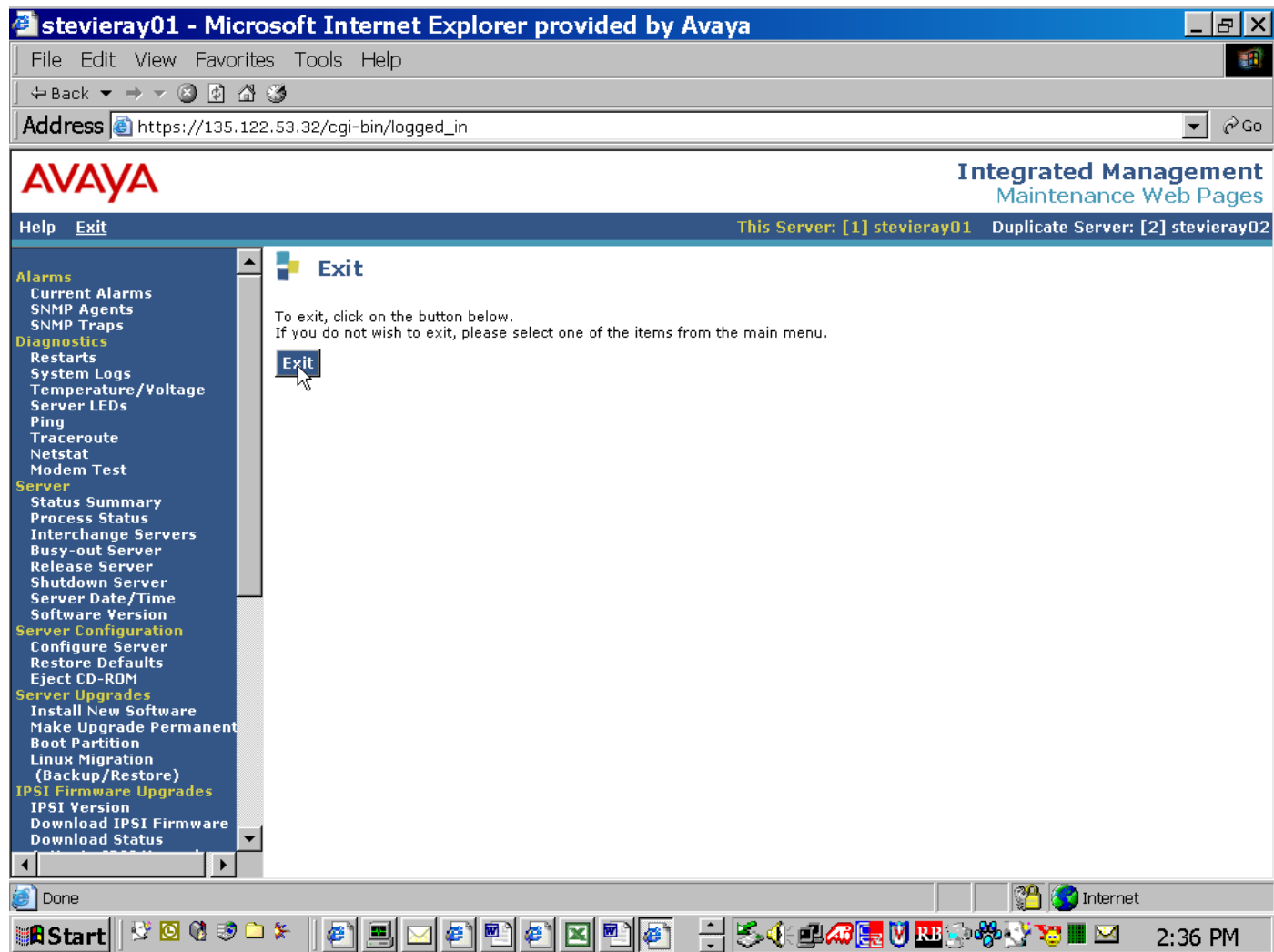
6. Enter the date and time in the format indicated next to each field. Select the correct time zone if the time zone shown is not correct. Click on the "submit" button to execute time change.



7. Click on "Exit" button to leave this screen and return to "Maintenance Web Pages".

This will bring you back to another "EXIT" window in the "Maintenance Web Pages" screen.

8. Click on this "EXIT" button to close the "Maintenance Web Pages" window and return to the "Integrated Management" "Standard Management Solutions" window.



9. Select a new task or logoff.

If you encounter difficulty in setting time via the web interface call (800)225-7585